



McSSL50

SOLAR STREET LIGHT

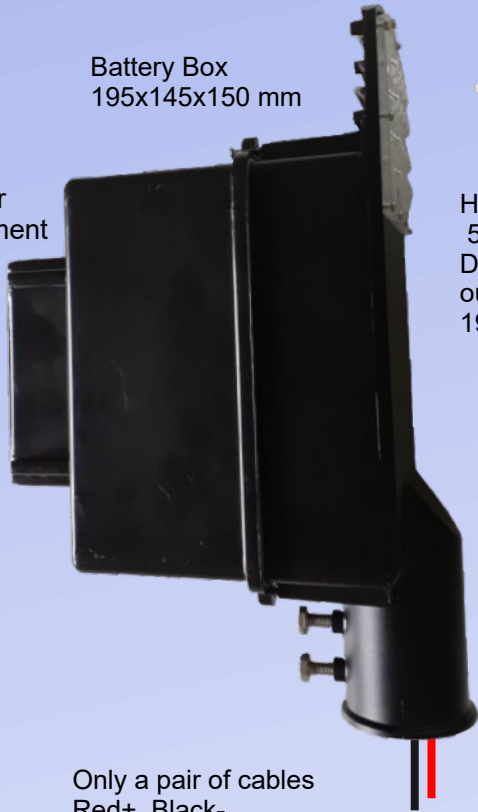


- User Selectable wattage: 30W/36W/40W/50W
- User Selectable battery type: LiFePO4/SMF or Li Ion
- User Selectable Dimming options: 4 different types of dimming mode
- Includes Unique Battery Saver mode
- Solar Panel support: 12V/275Wp
- Built-in Battery Box: Suitable for LiFePO4 12.8V/54AH
- High Power LEDs of 5W driven upto 3W for longer life
- Light luminescence : 193 Lm/W
- Total LED power capacity: 75W
- Upto 23% more Lux. More light in lesser wattage resulting in power saving, more efficient
- IEC 62093 Certified Charge Controller
- **Indigenous Magic Sense technology:** In transportation, the light remains off & it will get enable post installation making it switch free.
- **Bluetooth Monitoring:** Parameters of battery charging status, battery voltage, solar panel voltage, LED wattage can be seen on mobile app using bluetooth.
- **Remote Monitoring System RMS:** All parameters of solar street light, battery and solar panel can be seen on mobile app and website from anywhere. Note that 4G network is required at place of installation of solar street light with rms.
- Solar Impulse Foundation, Switzerland has awarded these solar streetlights with Efficient Solution Certification

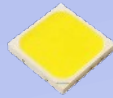


Battery Box
195x145x150 mm

Controller compartment

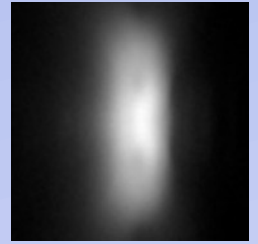
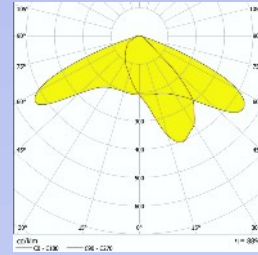


Only a pair of cables
Red+, Black-
to connect to solar panel



High Power
5W LED
Designed for
outdoor use.
190 lm/w

Crystal clear PC
lens.
Maximises light
along pathway.
Soft wide beam
with good
illuminance
uniformity.
UV protected.
Glare free.



Beam Angle

Beam Pattern
Along pathway

Battery Low
Indicator

Charging
Indicator



SYSTEM:	12V Nominal		
CAPACITY:	Input Panel 275Wp/12V, 14Amax		
	Output 30W, 36W, 40W, 50W		
REGULATION:	Low Loss, Series Type, 97% efficiency		
OUTPUT VOLTAGE DROP:	<100mV at 5A (OVD)		
INPUT VOLTAGE DROP:	<300mV at 14 A (IVD)		
BATTERY OPERATION (Based on customisation)	BATTERY TYPE		
	Lead Acid 12V	Li Ion 11.1V	LFP 12.8
LOW VOLTAGE DISCONNECT:	10.7 V	9.6 V	11.2 V
LOW VOLTAGE RECONNECT:	12.3 V	11.2 V	12.8 V
HIGH VOLTAGE DISCONNECT:	14.4 V	12.6 V	14.4 V
HIGH VOLTAGE RECONNECT:	14.3 V	12.3 V	13.8 V
HIGH VOLTAGE PROTECTION:	15 V	13.5 V	15 V
DUSK_SENSE	Panel Voltage < 4V		
DAWN_SENSE	Panel Voltage > 5V, 10 sec delay		
PROTECTIONS:	*Short Circuit / Overload *Reverse Battery *Reverse Solar Panel *Reverse flow of current from Battery to Panel during night *Lightening		
Electronic shutdown	If load>6A, load off and checks after 5 seconds automatically		
OPERATING TEMP RANGE:	0 to 60 C		

CHARGING: Green LED.

Turns on when panel voltage is more than battery voltage to indicate positive charging. It starts blinking when battery is charged.

BAT STATUS : RED LED.

- ➡ Turns ON when battery reaches LVD and disconnects the load. (BAT LOW)
- ➡ RED blinks if battery voltage is between LVD and LVR (BAT RESERVE)
- ➡ Turns OFF when battery is HEALTHY (between LVR and HVD)
- ➡ RED blinks fast when battery >HVDD or over load. Load is disconnected. Operation disabled.

CUSTOMISATION

MODE SELECTION

NML
TM1
TM2



No Link Battery Saver Mode. For selected load, brightness is automatically adjusted between 100% and 30% depending upon the battery capacity available .



NML. 100% light right from dusk to dawn.

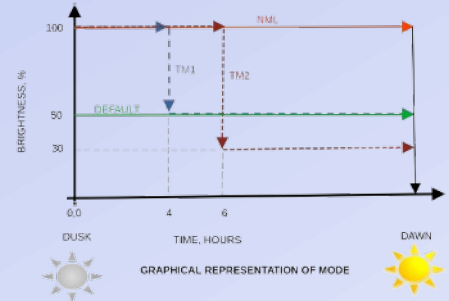


TM1 100% light for first 4 hours. Then 50% light till dawn.



TM2. 100% light for first 6 hours. Then 30% light till dawn.

MODE



LOAD SELECTION



No Link 30W



Wattage selected is 36W.

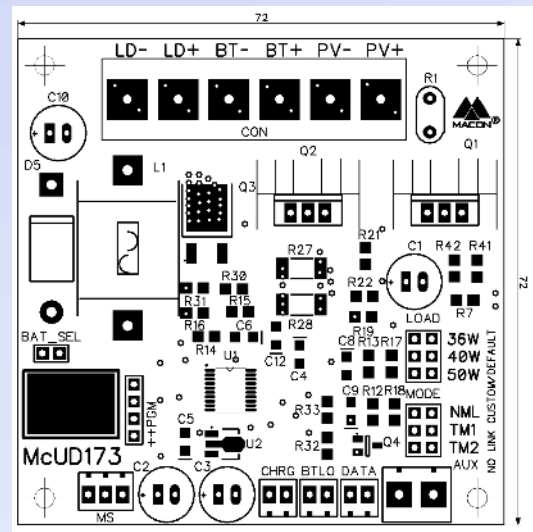


Wattage selected is 40W



Wattage selected is 50W.

LOAD



Please note
USING MORE THAN ONE LINK AT LOAD / MODE SELECT
MAY RESULT IN UNPREDICTABLE OPERATION.

BAT_SEL (battery selection)

Please see that battery selection is done before you proceed for other connections. Else it will result in erroneous operation of the controller.



With Link, 11.1V, Li_Ion



No Link, 12.8V LiFePO4 battery .

BAT_SEL