



## McSSL30

### SOLAR STREET LIGHT



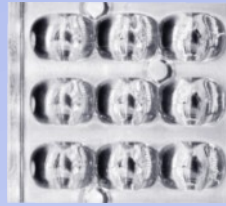
- User Selectable wattage: 12W/15W/20W/25W/30W
- User Selectable battery type: LiFePO4/SMF or Li Ion
- User Selectable Dimming options: 4 different types of dimming mode
- Includes Unique Battery Saver mode
- Solar Panel support: 12V/125Wp
- Built-in Battery Box: Suitable for LiFePO4 12.8V/30AH
- High Power LEDs of 5W driven upto 3W for longer life
- Light luminescence : 193 Lm/W
- Total LED power capacity: 45W
- Upto 23% more Lux. More light in lesser wattage resulting in power saving, more efficient
- IEC 62093 Certified Charge Controller
- **Indigenous Magic Sense technology:** In transportation, the light remains off & it will get enable post installation making it switch free.
- **Bluetooth Monitoring:** Parameters of battery charging status, battery voltage, solar panel voltage, LED wattage can be seen on mobile app using bluetooth.
- **Remote Monitoring System RMS:** All parameters of solar street light, battery and solar panel can be seen on mobile app and website from anywhere. Note that 4G network is required at place of installation of solar street light with rms.
- Solar Impulse Foundation, Switzerland has awarded these solar streetlights with Efficient Solution Certification



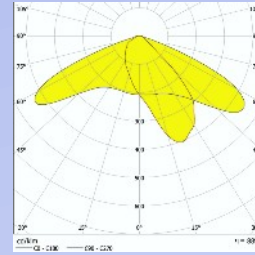
Battery Box  
195x145x120 mm



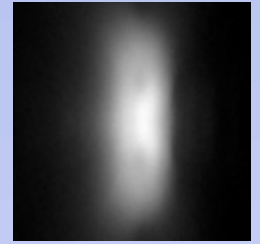
High Power  
5W LED  
Designed for  
outdoor use.  
190 lm/w



Crystal clear PC  
lens.  
Maximises light  
along pathway.  
Soft wide beam  
with good  
illuminance  
uniformity.  
UV protected.  
Glare free.

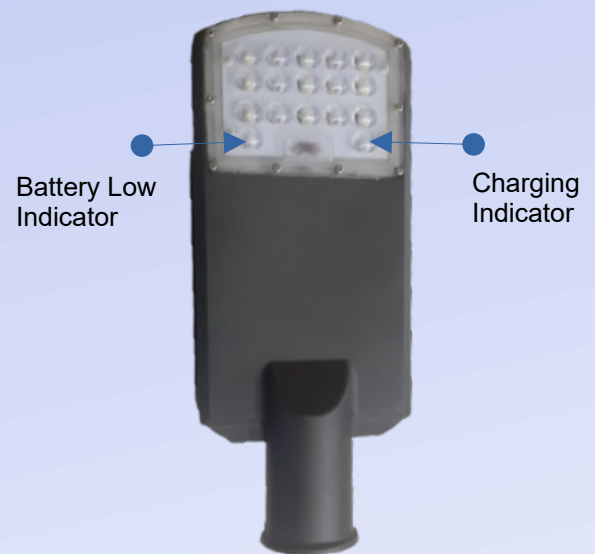


Beam Angle



Beam Pattern  
Along pathway

Only a pair of cables  
Red+, Black-  
to connect to solar panel



|   |   |                 |             |
|---|---|-----------------|-------------|
| SYSTEM:                                       | 12V Nominal   |                 |             |
| CAPACITY:                                     | Input Panel 125Wp/12V, 7Amax  |                 |             |
|   | Output 12W, 15W, 20W, 25W<br>Customisable upto 30W  |                 |             |
| REGULATION:                                   | Low Loss, Series Type, 97% efficiency   |                 |             |
| OUTPUT VOLTAGE DROP:                          | <100mV at 2.5A (OVD)2   |                 |             |
| INPUT VOLTAGE DROP:                           | <300mV at 7A (IVD)  |                 |             |
|   | BATTERY TYPE  |                 |             |
| BATTERY OPERATION<br>(Based on customisation) | Lead Acid<br>12V  | Li Ion<br>11.1V | LFP<br>12.8 |
| LOW VOLTAGE DISCONNECT:                       | 10.7 V  | 9.6 V           | 11.2 V      |
| LOW VOLTAGE RECONNECT:                        | 12.3 V  | 11.2 V          | 12.8 V      |
| HIGH VOLTAGE DISCONNECT:                      | 14.4 V  | 12.6 V          | 14.4 V      |
| HIGH VOLTAGE RECONNECT:                       | 14.3 V  | 12.3 V          | 13.8 V      |
| HIGH VOLTAGE PROTECTION:                      | 15 V  | 13.5 V          | 15 V        |
| DUSK_SENSE                                    | Panel Voltage < 4V  |                 |             |
| DAWN_SENSE                                    | Panel Voltage > 5V, 10 sec delay  |                 |             |
| PROTECTIONS:                                  | *Short Circuit / Overload<br>*Reverse Battery<br>*Reverse Solar Panel<br>*Reverse flow of current from Battery to Panel during night<br>*Lightening |                 |             |
| Electronic shutdown                           | If load>4A, load off and checks after 5 seconds automatically   |                 |             |
| OPERATING TEMP RANGE:                         | 0 to 60 C   |                 |             |

**CHARGING: Green LED.**

Turns on when panel voltage is more than battery voltage to indicate positive charging, It starts blinking when battery is charged.

**BAT STATUS : RED LED.**

- ➡ Turns ON when battery reaches LVD and disconnects the load. (BAT LOW)
- ➡ RED blinks if battery voltage is between LVD and LVR (BAT RESERVE)
- ➡ Turns OFF when battery is HEALTHY (between LVR and HVD)
- ➡ RED blinks fast when battery >HVDD or over load. Load is disconnected. Operation disabled.

# CUSTOMISATION

## MODE SELECTION

NML  
TM1  
TM2



**No Link Battery Saver Mode.** For selected load, brightness is automatically adjusted between 100% and 30% depending upon the battery capacity available .



**NML.** 100% light right from dusk to dawn.

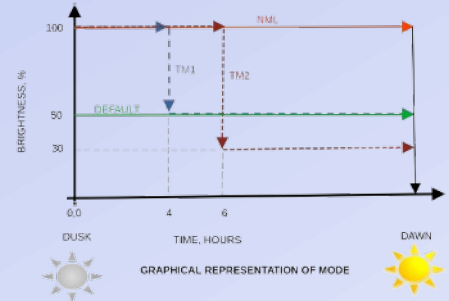


**TM1** 100% light for first 4 hours. Then 50% light till dawn.



**TM2.** 100% light for first 6 hours. Then 30% light till dawn.

MODE



## LOAD SELECTION

15 20 25



No Link. 12W or 30W (optional)



Wattage selected is 15W.

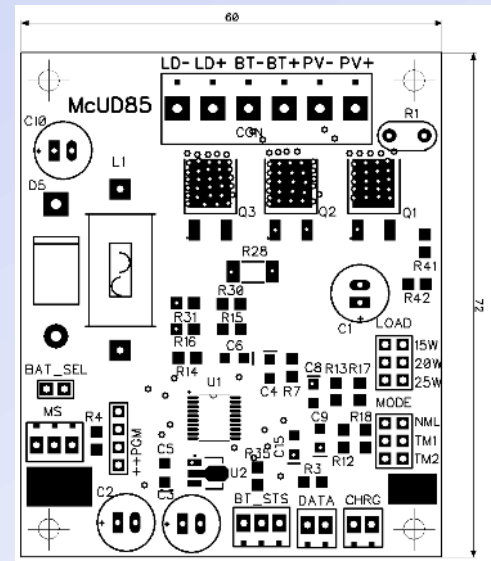


Wattage selected is 20W



Wattage selected is 25W.

LOAD



**Please note**  
**USING MORE THAN ONE LINK AT LOAD / MODE SELECT**  
**MAY RESULT IN UNPREDICTABLE OPERATION.**

## BAT\_SEL ( battery selection)

Please see that battery selection is done before you proceed for other connections. Else it will result in erroneous operation of the controller.



With Link, 11.1V, Li\_Ion



No Link, 12.8V LiFePO4 battery .

BAT\_SEL